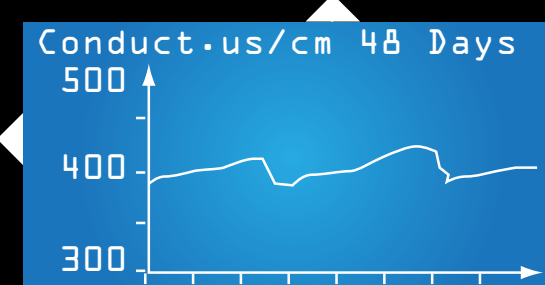
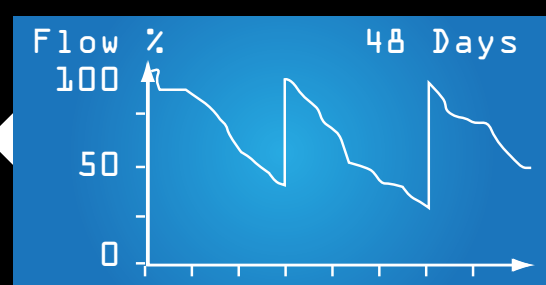
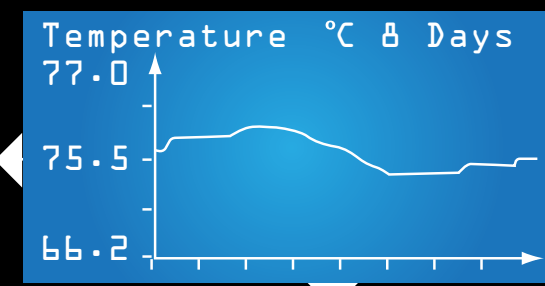




Set Language  
EN FR D  
SP IT



T °C =25.8  
EC ms/cm= 88  
MECH : 12 DAYS  
CHEM : 32 DAYS  
BIOL : 56 WKS



**ALERT**  
SENSING AIR IN FILTER  
MOTOR WILL NOT OPER.  
Refer to  
instructions man.

**ALERT**  
CHECK IMPELLER ROTOR  
Refer to  
instructions man.

**ALERT**  
TEMPERATURE  
OUT OF RANGE

**ALERT**  
CONDUCTIVITY  
OUT OF RANGE

**ALERT**  
LOW FLOW  
Refer to  
instructions man.



Low Flow after 5 min.  
from Power-On  
Low Flow within 5 min.  
from Power-on

Temperature Points  
Water Temp. °F 75.5  
Alert 0N  
-Min °F 71.6  
-Max °F 82.4

Conductivity Points  
Conduct. ms/cm 43  
Salinity PSU 28  
Alert 0N  
Min 48  
Max 58

Mechanical Schedule  
Elapsed Days 2  
Alert 0N  
Days to Alert 14

Chemical Schedule  
Elapsed Days 5  
Alert 0N  
Days to Alert 30

Biological Schedule  
Elapsed Weeks 9  
Alert 0N  
Weeks to Alert 26

Mechanical Schedule  
Counter Reset :  
Are you sure  
No Yes

Chemical Schedule  
Counter Reset :  
Are you sure  
No Yes

Biological Schedule  
Counter Reset :  
Are you sure  
No Yes

Operational Settings  
Temperature points  
Conductivity points  
Mechanical Schedule  
Chemical Schedule  
Biological Schedule

Operational Settings  
Temperature points  
Conductivity points  
Mechanical Schedule  
Chemical Schedule  
Biological Schedule

Global Settings  
Set Language  
Set Contrast  
Temp. Scale  
Set Dim Delay  
Set Default Settings

Global Settings  
Set Language  
Set Contrast  
Temp. Scale  
Set Dim Delay  
Set Default Settings

Set Language  
EN FR D  
SP IT

Set Contrast 26  
FLUVAL G3

Temperature Scale  
°C °F

Set Dim Delay  
6h 3m

Set Contrast 26  
FLUVAL G6

Erasing settings  
and recorded data!  
Reinitializing...

Restore Default  
Settings :  
Are you sure?  
No Yes



FLUVAL  
HYDROTECH  
PERFORMANCE MONITOR